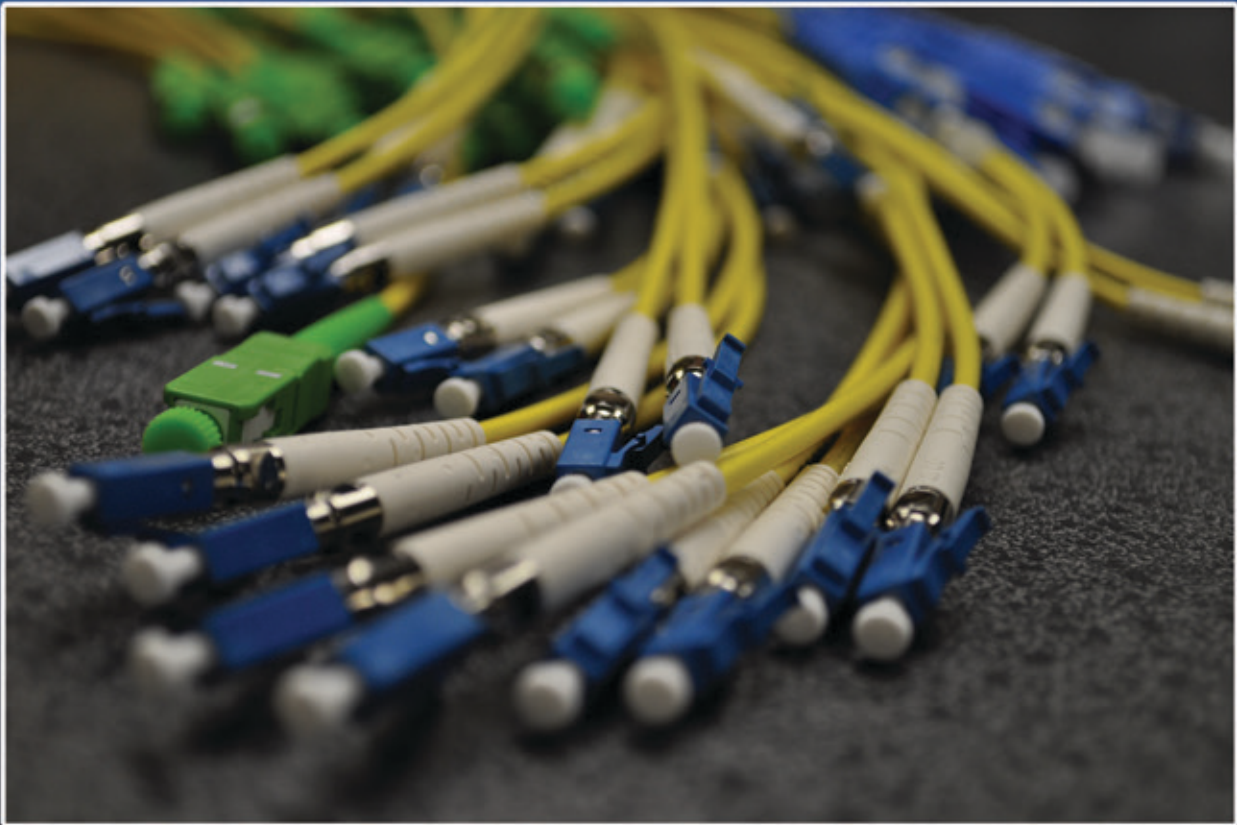


FiberNext

THE CONVERGENCE OF ETHERNET

SOLUTIONS & SERVICES

Cable Assemblies • Custom Optical Products • Fiber Optic Cable • Wireless Access
Panels & Enclosures • Fusion Splicers • Test Equipment • Consumables
Hand Tools • Copper Cabling • Networking Electronics • Consulting & Design
Subcontract Support • Project Management • Integration • CFOT® Training Programs
Network Video • Ethernet Lighting • Data Center Solutions • Installation Services



Rev.1.18.12

FiberNext is an innovated fiber optics technology company providing custom solutions, products, technical training and value-added services across the United States. FiberNext is a market leading distributor of thousands of networking components, equipment and tools. We partner with leading manufacturers in the industry to supply the latest technology solutions. In addition, we offer extensive fiber optic installation services and manufacture custom cable assemblies to provide unique customer-driven solutions.



Some of our leading vendors:



Proud Member of:



Table of Contents

Cable Assemblies.....	4
Cassettes and Modules	7
Fiber Patch Panels.....	11
Data Center Solutions.....	14
Network Racks and Cabinets.....	15
Splice Enclosures and OSP.....	16
Fiber Optic Test and Inspection	17
OTDR Launch Cables	18
MPO Test Switches.....	19
Fusion Splicing	20
Connectors and Terminating	21
Fiber Optic Cable	24
Cable Management and Labeling	25
Fiber Optic Connector Cleaning.....	26
Hand Tools.....	27
Copper Networking.....	28
Media Conversion and Switching	29
Ethernet Testing	30
Wireless Access Points	30
Network Video	31
Ethernet Lighting.....	31
Technical Services	32

Cable Assemblies

FiberNext is your source for fiber optic assemblies and custom interconnect products. We have been manufacturing quality fiber optic cable assemblies since 2003. We offer quick turnaround time on customized assemblies to meet demanding project schedules.

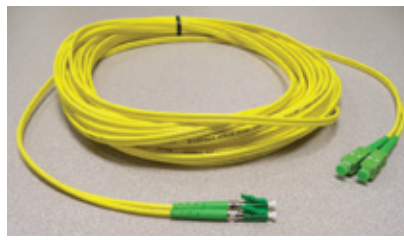
Patch Cords

Fiber optic patch cords are commonly used for all interconnection applications. Available in plenum or riser style jacket with either simplex or duplex fiber. We provide a wide variety of custom termination capabilities, fiber types and lengths to meet your specific needs.

Patch Cord Examples:



3 Meter, Duplex, Multimode 62.5um, SC-ST



5 Meter, Duplex, Single-mode, LC/APC-SC APC

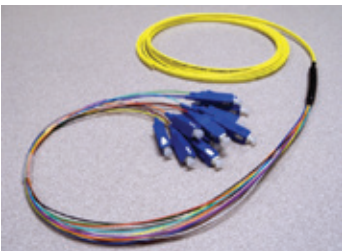


3 Meter, Duplex, Multimode, OM3, LC-LC

Pigtails

FiberNext fiber optic pigtails are available with single-ended pre-terminated buffered fiber commonly used for splicing into patch panels. Pigtails can also be made with multifiber, jacketed cable that are often referred to as “fanout”, “breakout”, “distribution tails” or “whips”. Pigtails are split into 2, 4, 6 or 12 fiber sets.

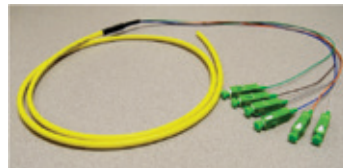
Pigtail Examples:



Jacketed Ribbon Pigtail, 3 Meter, 12 Fiber, Single-mode, SC



900um Buffered TIA Colored Pigtail, 2 Meter, 12 Fiber, Multimode, SC



Jacketed Distribution Pigtail, 3 Meter, 12 Fiber, Single-mode, SC/APC

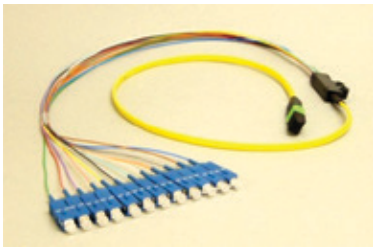


Loose Tube Pigtails, OSP PE Back, 100 FT, 6 Fiber, Single-mode SC APC

MPO/MTP Assemblies

MPO patch cables are becoming increasingly popular, especially for data center applications wherein parallel transport configurations utilize between 8-24 strands of fiber to transmit 40 and 100 Gigabit Ethernet. The most common MPO ferrule types are 12 strand or 24 strand and they come in either male (with guide pins) or female (with guide sockets) gender. In addition, Single-mode MPO ferrules are typically angled polish (APC), whereas Multimode connections are Flat or Physical Contact (PC) polished.

MPO Assemblies Examples:



MPO Fanout Cable, 2 Meter, 12 Fiber,
Single-mode, MPO Female-SC



MPO-MPO Patch Cord, 12 Fiber Ribbon,
2 Meter, Jacketed, Single-mode



MPO Fanout Cable, 5 Meter, 12 Fiber,
50um OM3, MPO Female-LC

LC Uniboot Assemblies

LC Uniboot assemblies offer a more compact design when compared to traditional duplex zip cord assemblies. This unique assembly uses a round simplex style jacket that contains two x 250um fibers. The LC connector housing has a single boot, terminated on to the single jacketed two-fiber cable. LC Uniboot assemblies minimize cable management to half the space used by conventional assemblies. Uniboot assemblies are a great solution for high-density patching applications.

Available in Single-mode and Multimode 50um fiber in lengths 1 to 6 meters.



AFL



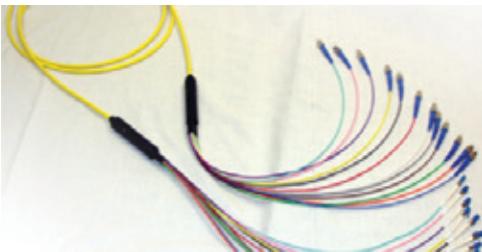
SENKO
Advanced Components

Cable Assemblies

Multi-Fiber Assemblies

FiberNext manufactures a wide variety of multi fiber and longer length assemblies for various applications. We use indoor/outdoor Plenum rated cable, which is extremely versatile and allows assemblies to be installed in virtually any environment. Standard distribution style cable in either Riser (OFNR), Plenum (OFNP), Polyethylene, Tactical or LSZH is also available. The assemblies can be ordered with pulling eyes, protective netting, Kellems® grips, furcation tubing, breakout kits or whatever your application requires. Any connector and fiber type can be used.

Multi-Fiber Assemblies Examples:



Distribution Cables



Ruggedized Cables



Termini



Multi-Fiber
On-Reel



Ribbon-Fiber
On-Reel w/ Eyes

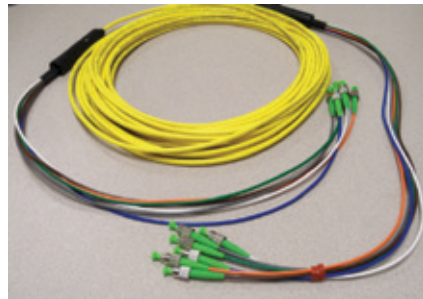
Specialty Fiber Optic Assemblies

FiberNext offers a wide variety of specialty assemblies designed to meet demanding and unique applications. Our expertise includes tactical assemblies spooled on deployable drums, node drop cables, metalized interlock armored assemblies, expanded beam, flat drop FTTx, broadcast cables and military style harnesses such as D38999. FiberNext has the ability to make virtually any specialty assembly around your requirements. We also can provide engineering and design services to meet your unique application.

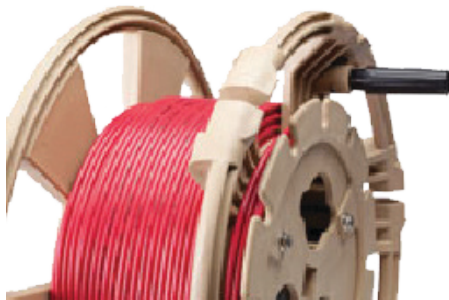
Below are examples some of the unique assemblies we provide.



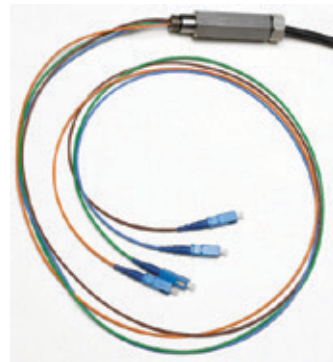
Optical Flat Drop Cable Assemblies



Heavy Duty Breakout Assemblies



Tactical Deployable Cable



Heavy Duty Breakout Assemblies

Cassettes and Modules

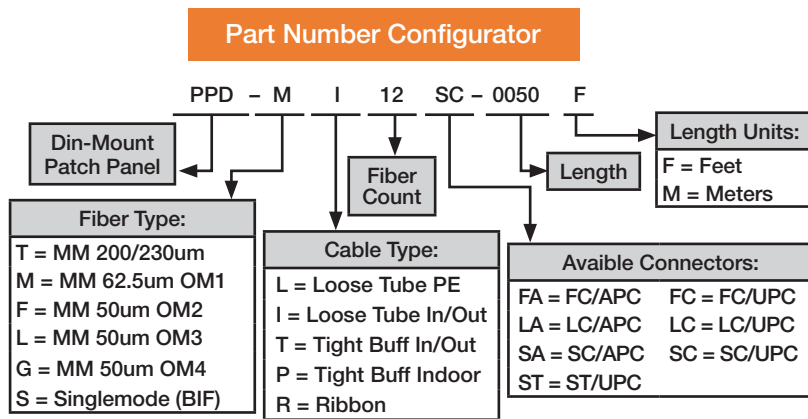
FiberNext Din-Rail Mountable Fiber Optic Patch Modules

The FiberNext family of Din-Rail mountable fiber optic patch modules solve many of the problems encountered when trying to adapt conventional fiber optic patch panels for use in power, control, SCADA and/or industrial cabinets. These modules mount directly to conventional Din-Rail, which allows it to maintain a minimal footprint, keeps the patching in close proximity to the active equipment it serves and minimizes cable management in the cabinet.

These modules can be configured with any connector style (including LC, LC/APC, SC, SC/APC, ST, FC and others) and any fiber type such as Single-mode, 50 or 62.5um Multimode and common industrial fiber types such as 100/140um or 200/230um. The fiber connections can be pre-fabricated and tested in a lab, or the modules can be purchased empty and terminated in the field using traditional pigtailed or common field connectors.

Unloaded Din-Rail Patch Module PN: PPD-UN001-CFO *Requires LGX adapter plate on page 13.

Please call Sales at 603-226-2400 for assistance selecting the proper configuration when ordering.



Pre-terminated indoor/outdoor MM Example:
PN: PPD-LL24LC-0100F
Din Panel MM OM3 50um 24F LC In/Outdoor Pigtail 100'



Pre-terminated indoor/outdoor SM Example:
PN: PPD-ST06SC-0300F
Din Panel SM 6F SC In/Outdoor Pigtail 300'



Pre-terminated outdoor only SM Example:
PN: PPD-SL12SC-0300F
Din Panel SM 12F SC Loose Tube Pigtail 300'

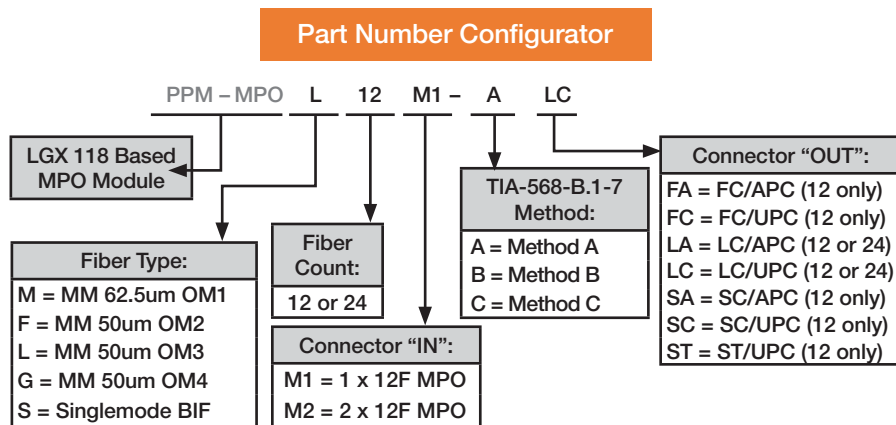


Pre-terminated outdoor only MM Example:
PN: PPD-ML12ST-0200F
Din Panel MM 62.5um 12F ST Loose Tube Pigtail 200'

FiberNext LGX MPO Cassettes

The FiberNext brand of MPO/MTP Cassettes are fully pre-terminated modules for “plug-and-play” networking. These cassettes fit any LGX-118 based patch panel frame as well as Corning Cable Systems™ patch panels and frames when using our adapter bezel. These cassettes fanout multi-fiber MPO/MTP connectors to simplex or duplex style connectors such as LC or SC. Our entire family of low-loss MPO/MTP cassettes are finished with a durable powder coat and are available in Method A, B or C wiring. These cassettes are the perfect solution for conventional data center cabling including 10 and 40G networks, or can be used anywhere simplified plug-and-play ease of installation is preferred. The cassettes all offer low-loss MPO/MTP output connections and Telcordia compliant UPC or APC terminations for the single-fiber input connections.

Please call Sales at 603-226-2400 for assistance selecting the proper configuration when ordering.



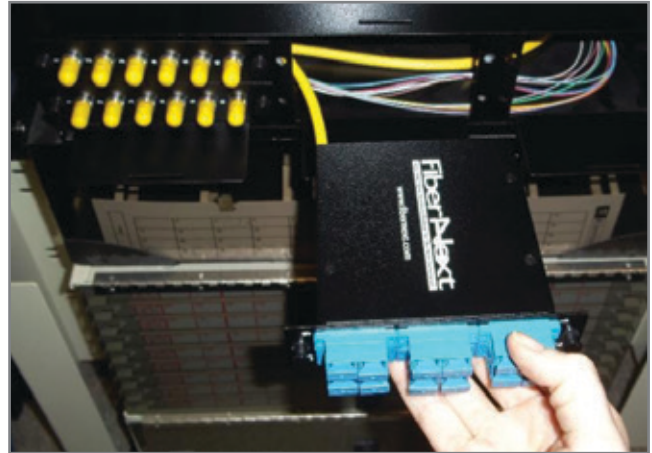
FiberNext LGX-118 MPO Cassette Part Number Examples:

PN: PPM-MPO-M12M1ASC
PN: PPM-MPO-L12M1ALC
PN: PPM-MPO-G24M2ALC
PN: PPM-MPO-S24M2ALA

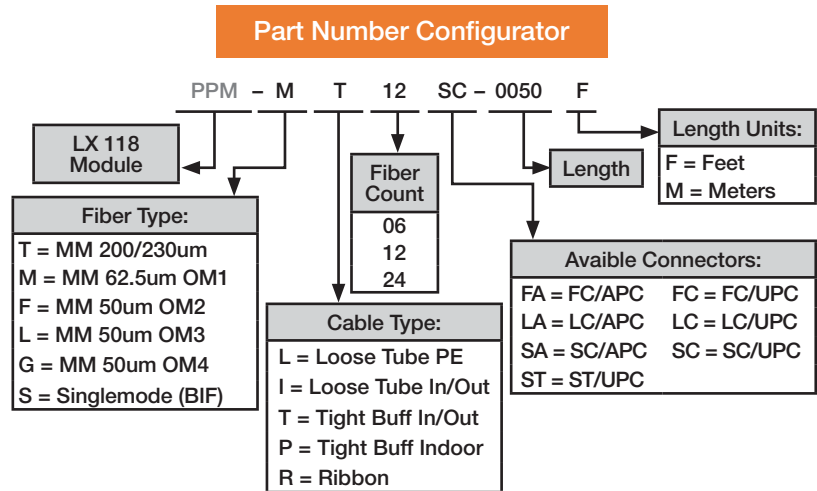
Single MPO(M)-SC/UPC OM1 LGX118 Cassette
Single MPO(M)-LC/UPC OM3 LGX118 Cassette
Dual MPO(M)-LC/UPC MM 50um OM4 LGX118 Cassette
Dual MPO(M)-LC/APC SM LGX118 Cassette

FiberNext Pre-Terminated Cassettes

Using our LGX118 compatible splice-in cassette solutions, installers would define the type of fiber required, length of cable needed, the connector style and FiberNext would pre-fabricate the complete assembly as a pigtail. Upon delivery to site, the user would then pull the stub end through the pathway and splice it at a splice junction. The cassette would be installed into an LGX118 compatible wall or rack mount panel. This is the highest quality and fastest termination available in the field today for high density applications.



Please call Sales at 603-226-2400 for assistance selecting the proper configuration when ordering.



Pre-terminated outdoor only Loose Tube MM Example:
PN: PPM-ML06ST-0075F
ST 6-Fiber MM 62.5um LT Pigtail Black, 75Ft



Pre-terminated indoor/outdoor MM Example:
PN: PPM-MT12SC-0150F
SC 12-Fiber MM 62.5um Pigtail Orange, 150Ft



Pre-terminated indoor/outdoor SM Example:
PN: PPM-ST12SC-0025F
SC 12-Fiber SM Pigtail Yellow, 25Ft

Fiber Patch Panels

Wall Mount Fiber Panels

Our strength is making sure the end user has the right product for their connectivity application, either from our standard product offerings or by quickly and economically developing just the right configuration of enclosure, module, assembly or combination that will meet the need. Our LGX-based family of interchangeable products utilizes a rugged gauge of steel, a quality powder coat finish and can be fully configured to meet your needs. Below are some of the brands and examples of Wall Mount Panels we offer:



Wall Mount Patch and Splice Panel Examples:



PN: PPW-UN014-OCC
6-12F Zone Box Splice/Term Unloaded Black



PN: PPW-UN006-AFL
WME02E 12-24F Splice/Term Unloaded Black, Lock



PN: PPW-UN005-AFL
WME04E 24-48F Splice/Term Unloaded Black, Lock

NEMA Rated Wall Mount Patch and Splice Panel Example:



PN: PPW-UN002-AFL
24F NEMA 3 Splice/Term Unloaded Plastic

For Adapter Plate examples see page 13.

Rack Mount Fiber Panels

Splice-on connector technology allows users to install a fusion spliced connector directly to a fiber strand without the use of traditional pigtail, splice trays and related cable management, saving space, time and money. FiberNext is your resource for in-stock splice-on connectors, support and training. Below are examples of some of the brands and Rack Mount Panels we offer.



Rack Mount Media Bar Examples:



PN: PPR-UN046-FNX
1RU Mounting Platter 3 LGX Plates, 8"D, Open Slot



PN: PPR-UN006-MLK
1RU Mounting Bar, Black, Holds 3 LGX Style Plates

Rack Mount Patch Panel Examples:



PN: PPR-UN044-FNX
1RU Splice/Term Unloaded Black
Holds 3 Plates



900um Buffered TIA Colored Pigtail,
2 Meter, 12 Fiber, Multimode, SC



Jacketed Distribution Pigtail, 3 Meter,
12 Fiber, Single-mode, SC/APC



Loose Tube Pigtails, OSP PE Back, 100 FT,
6 Fiber, Single-mode SC APC

NEMA rated Rack Mount Patch Panels are also available. For Adapter Plate examples see page 13.

Patch Panel Accessories

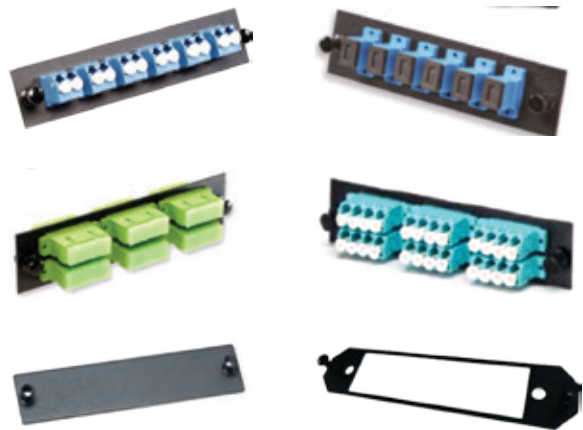
FiberNext offers an extensive variety of connector adapters, adapter plates, splice trays and splice tray accessories to meet all of your patch panel applications. Below are some examples of the products we carry.

Call Sales at 603-266-2400 for support with your specific needs.

Connector Adapter Examples:



LGX Adapter Plate Examples:



Fusion Splice Tray Examples:



Splice Tray Accessories Examples:



Data Center Solutions

FiberNext offers data center connectivity and solutions from several manufactures to meet all your data center needs. Below are a couple of examples of what we offer.

An emerging trend in data center design is modular Micro Data Center, which provides cost effective, energy efficient data center service with a rapid deployment time frame. Canovate® Micro Data Center solution is the right and cost effective answer for this increasing demand. Canovate® Micro DC solution is an integrated data center solution that incorporates Racks, UPS, Cooling, Fire Suppression, PDU and Environmental Monitoring System (EMS) in a compact single platform.

IT professionals rely upon CANOVATE for leading-edge solutions that incorporate innovative technologies.

Data Center Solutions Examples:

- Maxi Data Center
- Mini Data Center
- Micro Data Center
- Mobile Data Center

Data Center Products Examples:

- Cooling Systems
- Power Solutions
- Environmental Monitoring
- Security & Safety Solutions
- Fire Suppression
- Power Distribution Units

CANOVATE®

Micro Data Center



AFL XFM®-HD High Density Patch Panels deliver unsurpassed density and fiber management to high-performance, high density networks. An innovative, integrated cable management design provides end users with complete organization and control of entering and exiting fibers while requiring virtually no external cable management, all while providing near 100% rack space utilization.



AFL

XFM®-HD Products:

- | | |
|-------------------|--|
| PN: PPR-UL001-AFL | XFM-HD 144 Port LC 1RU Panel Frame (Empty) |
| PN: PPR-UL002-AFL | XFM-HD 288 Port LC 2RU Panel Frame (Empty) |
| PN: PPR-UL003-AFL | XFM-HD 576 Port LC 4RU Panel Frame (Empty) |
| PN: PPM-LC001-AFL | MPO-LC 50um OM3/4 12F Cassette Module Aqua |
| PN: PPM-LC002-AFL | MPO-LC SM OS1 12F Cassette Module Blue |

DON'T SEE WHAT YOU'RE LOOKING FOR? GIVE US A CALL AND WE CAN FIND IT FOR YOU!

41 Locke Road, Concord, NH 03301 | T: 603-226-2400 | F: 603-226-2410 | www.FiberNext.com

Network Racks and Cabinets

A common element of most every networking project are the racks and frames. FiberNext provides metal panel and cabinet products from OCC, Canovate® and many others. We even have the ability to customize many panel and cabinet products, let us know what features you need and we'll design a solution.



Free Standing Racks and Cabinets Examples:

Canovate 19" Steel Network Rack



- PN: PPA-RK004-OCC 36RU Standard 19" Open Bay Rack
- PN: PPA-RK005-OCC 45RU Standard 19" Open Bay Rack
- PN: CAB-FS001-OCC 38RU x 24"D Free Standing Cabinet, Black

Wall Mounted Racks and Cabinets Examples:

Canovate Slim Line Wall mount Cabinet



- PN: PPA-RK007-OCC 12RU x 25"D Wall Mounted Swing Open Bay Rack
- PN: PPW-AC005-OCC 4RU x 19"W x 8"D Wall Bracket, Hinged, Black
- PN: AB-WM012-OCC 24RU x 24" Deep Swing Mount Wall Cabinet, Black

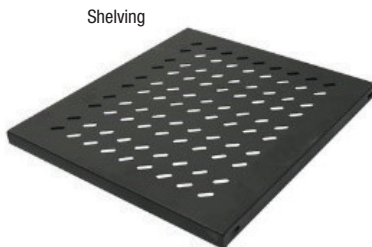
Rack and Cabinet Accessories Examples:



Cable Organizers



Power Distribution Units



Shelving

Contact us for a customized solution!



Slotted Finger Duct

Splice Enclosures and OSP

Splice accessories and outside-plant (OSP) enclosures and pole line hardware can be complicated to order and configure properly. Here at FiberNext, our customer service team can assist you with the right product for your application by offering dozens of manufacturers of splice trays, splice cases, ADSS hardware, pole line hardware, cable storage shoes and more. With products from AFL, Hubbell and others, FiberNext has the right products in stock to help you with splicing in OSP environments. Below are examples of some of the items we carry.



Rack Mount Media Bar Examples:



PN: SPL-EN001-AFL
LG250 96-Fiber Butt Style Splice Enclosure

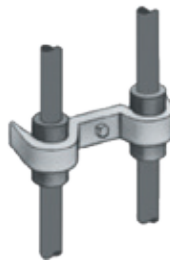


LightGuard® 500 Aerial Weathertight
Fiber Optic Splice Closure

ADSS Hardware Examples:



ADSS In-line Trunnion Assembly .424



ADSS Down Lead Cushion



ADSS In-line Trunnion Assembly .424



ADSS Preform Cable Grip w/ Clevis .424



Fiber Storage Units for ADSS Fiber Optic Cable

DON'T SEE WHAT YOU'RE LOOKING FOR? GIVE US A CALL AND WE CAN FIND IT FOR YOU!

41 Locke Road, Concord, NH 03301 | T: 603-226-2400 | F: 603-226-2410 | www.FiberNext.com

Fiber Optic Test and Inspection

FiberNext works with the leading manufacturers of fiber optic test and inspection products to bring you the equipment that you need to get the job done. From troubleshooting to full network documentation we can get you the equipment that meets your needs. Here are examples of some of the types of products we offer.



OTDRs Examples:



MAX-715B



iOLM



FlexScan

Loss Test Kit Examples:



SMLP5-5



Contractor Series



ODM

Fiber Identifies and Visual Fault Locators



Senko Fiber Checker



VF12 HiLite



ODM

Inspection Scope Examples:



FOCIS Flex



FIPT-400-MF - automated multifiber inspection solution



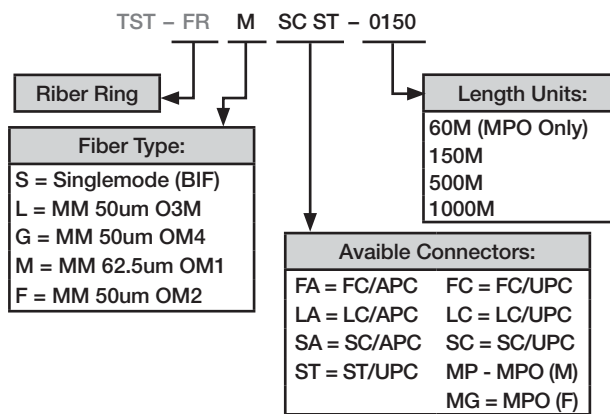
VS300 View Safe Video Microscope

OTDR Launch Cables

Fiber Rings

Fiber Rings are compact launch/receive cables designed to measure the insertion loss of the near-end and/or far-end connection of a fiber optic link using an OTDR. Both a launch and receive cable are required to measure complete link loss of a fiber with an OTDR. A launch cable, which connects the OTDR to the link under test, reveals the insertion loss and reflectance of the near-end connection. A receive cable, which connects to the far-end of the link, reveals the insertion loss and reflectance of the far-end connection. Launch and receive test cables can range from 150 m to 1 km (or longer) in length. Because very long test cables are impractical to transport and use, AFL offers coiled lengths of 50um multimode, 62.5um multimode, or single-mode fiber conveniently packaged in compact rings.

Fiber Ring Part Number Configurator



Multimode 62.5 um, SC-SC, 150 Meter
PN: TST-FR-M-SC-SC-0150



Single-mode, FC-SC, 150 Meter
PN: TST-FR-S-FC-SC-0150



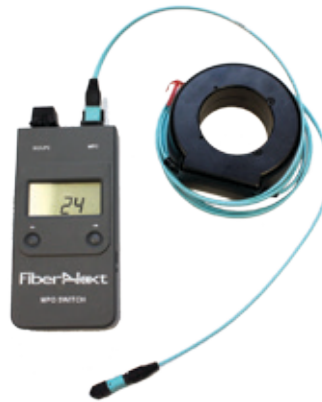
Multimode 50 OM3 um, LC-SC, 150 Meter
PN: TST-FR-L-LC-SC-0150

FiberNext MPO Test Switches

The FiberNext MPO Test Switch allows users to quickly and easily test discrete strands within 12 and 24 MTP or MPO cables. Continuity can be verified by simply attaching a VFL to the switch input port using a fiber optic patch cord and scrolling through the fiber count. Cables can be tested for optical loss and ORL by connecting the switch to an OTDR using a patch cord, with a second cable (or “launch cord”) which would be patched to the MPO cable under test. While testing, the user can analyze the optical performance on strand one, store the test report and simply click the “fiber up” button to increment the test without having to physically disconnect, speeding test times. To further speed testing, a receive cable can be connected to the far end to accomplish Framed Link Testing as defined in ISO/IEC 11801.

MPO Test Switches Available Models:

TST-5506S-FNX	12-Fiber MPO Switch, Single-mode MPO Angled
TST-5506M-FNX	12-Fiber MPO Switch, Multimode OM3 50um
TST-5507MN-FNX	24-Fiber MPO Switch, Multimode OM4 50um



Accessories:

Fiber Multimode OM3 MPO Rings:

TST-FR-L-MG-MG-0061	MPO(f)-MPO(f) OM3 50um 61 Meters
TST-FR-L-MG-MP-0061	MPO(f)-MPO(m) OM3 50um 61 Meters
TST-FR-L-MP-MP-0061	MPO(m)-MPO(m) OM3 50um 61 Meters

12 Fiber Single-mode MPO Rings:

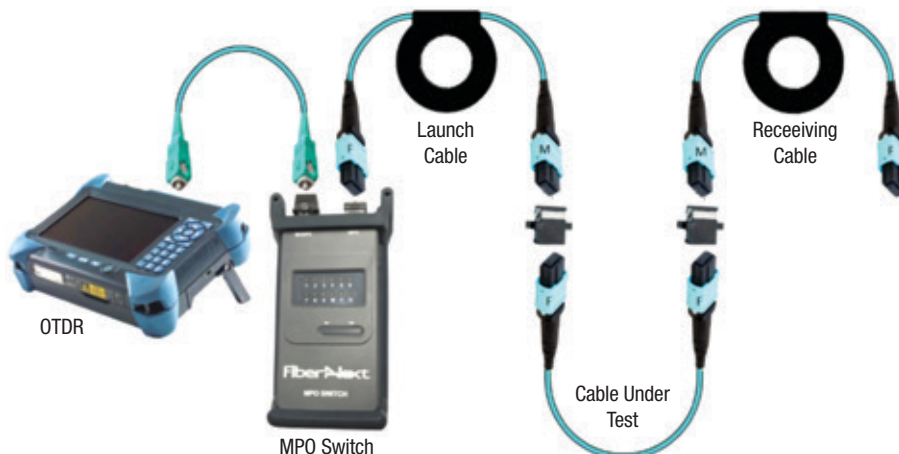
TST-FR-S-MG-MG-0061	MPO(f)-MPO(f) Single-mode 61 Meters
TST-FR-S-MG-MP-0061	MPO(f)-MPO(m) Single-mode 61 Meters
TST-FR-S-MP-MP-0061	MPO(m)-MPO(m) Single-mode 61 Meters

24 Fiber Multimode OM4 MPO Rings:

TST-FR-G-MG-MG-0046	MPO(f)-MPO(f) OM4 50um 46 Meters
TST-FR-G-MG-MP-0046	MPO(f)-MPO(m) OM4 50um 46 Meters
TST-FR-G-MP-MP-0046	MPO(m)-MPO(m) OM4 50um 46 Meters

Switch Mating Adapters:

ADM-MTP03-SEN	MTP Flanged, Key Up to Key Down, Black
ADM-MTP04-SEN	MTP Flanged, Keys Aligned, Gray



Fusion Splicing

Fusion splicing technology is the fastest and lowest loss method of joining, terminating and repairing fiber optic cables. Significant advancements in equipment design and technology have made fusion splicers much more durable, user friendly and automated than ever before. FiberNext is proud to offer products from the market dominating splicer equipment manufacturers. From V-Groove and Core Alignment to Mass Ribbon splicing machines, cleavers and accessories FiberNext can provide the tools necessary to get the job done. FiberNext staff members are fully trained on splicing technology and can support our customers with questions and any training needed to get them up and running quickly. **Below are examples of some of the products we offer.**

Fusion Splicer Examples:



T-400S Active Clad Handheld Fusion Splicer



Quantum Type-Q101-M12 Mass Fusion



Quantum Type-Q102-CA Core Alignment Fusion Splicer



Fujikura 12S Fusion Splicer



Fujikura 70S+ Fusion Splicer



Fujikura 70R+ Fusion Splicer

Fusion Splicer Accessories:



CT-50 Fiber Cleaver



FC-8R Fiber Cleaver



Splice Protection Sleeves



Fiber Holders

Connectors and Terminating

FiberNext offers a wide range of pre-polished connectivity solutions as well as fuse on connectors for terminating and repairing fiber strands.

Pre-polished Connectors

FiberNext offers pre-polished connectivity solutions such as the AFL FAST®, Sumitomo Quick® and Senko XP Fit connectors. Pre-polished connectors are available for Single-mode and Multimode fiber in ST, SC, LC and SC/APC connector styles.



For support on choosing the proper solutions related to terminating fiber on your specific project, please contact Sales at Sales@FiberNext.com or call 603-226-2400.

AFL FuseConnect® Connectors and Accessories

Fusion splicing is the fastest method of field terminating and repairing fiber strands, while also providing the best overall insertion and return loss performance. Splice-on connector technology allows users to install a fusion spliced connector directly to a fiber strand without the use of traditional pigtail, splice trays and related cable management, saving space, time and money. FiberNext is your resource for in-stock splice-on connectors, support and training

AFL FuseConnect® Tools:

TSPL-AC010-AFL FuseConnect® MPO Term Kit (for Ribbon Fiber)

AFL FuseConnect® SC Connectors:

CP6-SC008-AFL SC Multimode 62.5um Connector Kit 900um Boot
 CP6-SC004-AFL SC Multimode 62.5um Connector Kit 3mm Boot
 CP5-SC016-AFL SC Multimode 50um OM2 Connector Kit 2/3mm Boot
 CP8-SA009-AFL SC/APC Single-mode Connector Kit 3mm Boot
 CP8-SC014-AFL SC Single-mode Connector kit 900um Boot

AFL FuseConnect® LC Connectors:

P8-LC008-AFL LC Single-mode Connector kit 2mm Boot
 CP5-LC010-AFL LC Multimode 50um Conn Kit 900um Boot, Black
 CP5-LC009-AFL LC Multimode 50um OM3 Connector Kit 2mm Boot

AFL FuseConnect® ST Connectors:

CP8-ST003-AFL ST Single-mode Connector Kit 900um Boot
 CP5-ST002-AFL ST Multimode 50um OM2 Connector Kit 900um Boot

AFL FuseConnect® FC Connectors:

CP8-FC001-AFL FC Single-mode Connector Kit 900um Boot
 CP6-FC001-AFL FC Multimode 62.5 Connector Kit 900um Boot

AFL FuseConnect® MPO Connectors:

CP8-MP001-AFL MPO 12F Single-mode Female Bare Fiber Conn Kit
 CP5-MP003-AFL MPO 12F Multimode 50um OM3 Fem Round Conn Kit

AFL FuseConnect® Fiber Holders

CPA-AC123-AFL 2mm Fiber Holder 60s,70s FH-FC-2000
 CPA-AC124-AFL 3mm Fiber Holder 60s,70s FH-FC-3000
 CPA-AC122-AFL 900um Fiber Holder 60s,70s FH-FC-900



DON'T SEE WHAT YOU'RE LOOKING FOR? GIVE US A CALL AND WE CAN FIND IT FOR YOU!

41 Locke Road, Concord, NH 03301 | T: 603-226-2400 | F: 603-226-2410 | www.FiberNext.com

Sumitomo Lynx® Connectors and Accessories

Splice-On connectors are simplifying conventional field terminations and improving quality. Let FiberNext show you how to revolutionize your field terminations while simplifying the process!

Sumitomo Lynx® Tools:

SPL-AC111-SUM	Lynx® Term Kit (used for 2 & 3mm Jacketed Fiber)
CPA-AC011-SUM	Lynx® MPO Corded Ribbonizing Assembly Platform
TOL-00101-SUM	Lynx® Connector Assembly Jig



Sumitomo Lynx® SC Connectors:

CP6-SC007-SUM	SC Multimode 62.5um Connector Kit 250/900um Boot
CP5-SC009-SUM	SC Multimode 50um Connector Kit 900um Boot
CP8-SC006-SUM	SC Single-mode Connector Kit 250/900um Boot [F]
CP8-SC015-SUM	SC Single-mode Connector Kit 900um Boot Loose Tube
CP8-SA007-SUM	SC/APC Single-mode Connector Kit 2mm Boot [B]



Sumitomo Lynx® LC Connectors:

CP5-LC003-SUM	LC Multimode 50um OM2 Connector Kit 900um Boot [A]
CP5-LC008-SUM	LC Multimode 50um OM3 Connector Kit 2mm Boot [C]
CP8-LC002-SUM	LC Single-mode Connector Kit 250/900um Boot
CP8-LA001-SUM	LC/APC SM Connector Kit 900um Loose Tube [H]



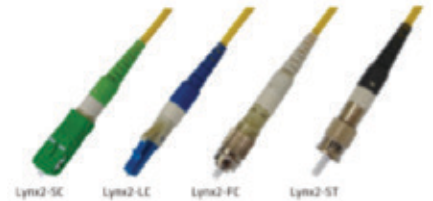
Sumitomo Lynx® ST Connectors:

CP6-ST001-SUM	ST Multimode 62.5um Connector Kit 250/900um Boot
CP5-ST002-SUM	ST Multimode 50um OM3 Connector Kit 250/900um Boot
CP5-ST001-SUM	ST Multimode 50um OM2 Connector 900um Boot [D]
CP8-ST006-SUM	ST Single-mode Connector Kit 2mm Boot
CP8-ST010-SUM	ST Single-mode Connector kit 250/900um [E]



Sumitomo Lynx® FC Connectors:

CP8-FC001-SUM	FC Single-mode Connector Kit 2mm Boot
CP6-FC003-SUM	FC Multimode 62.5um Connector Kit 900um



Sumitomo Lynx® MPO Connectors:

CP5-MPO04-SUM	MPO 12F MM 50um OM3 Male Flat Cable Conn Kit [G]
CP8-MPO02-SUM	MPO 12Fiber SM Male Round Cord Connector Kit

Sumitomo Lynx® Fiber Holders:

CPA-AC120-SUM	12 Count Ribbon Holder [I]
SPL-AC142-SUM	250um Loose Tube Fiber Holder (Left Side) [J]
SPL-AC116-SUM	900um Single Fiber Holder (Pair) [K]



Fiber Optic Cable

FiberNext carries an extensive line of fiber optic cables for multiple applications including simplex/duplex assembly cordage, distribution, sub-unitized distribution, breakout, and ribbon with riser (OFNR/OFCR) and plenum (OFNP/OFCP) jacket styles. Some popular cable types are described below.

Simplex & Duplex Cables are used for interconnect applications such as fiber patch cords, assemblies and launch reels.

Distribution Cables are tight buffered cables used in intrabuilding/interbuilding applications and data centers. These cables are the most typical premise choice, as the outer diameter is small, flexible and user friendly. Fiber Counts range from 2F to 144F typically. OFNR, OFNP, LSZH and Tactical Polyurethane are available.

Interlocking Armor Cables provide extra protection against damage in areas that are subject to harsh environment. By using interlocking armor, one saves the cost of installing both conduit and fiber by only having one pull. The diameter is smaller, so there is less pathway fill. There is an extruded outer jacket which provides identification and makes installation easier and carries the same flame rating as the cable within it.

Breakout Cables are typically used as direct interconnections between active devices. The cable can be brought to one distribution point and then breakout duplex drops are run to the fiber outlets. This type is different from standard distribution, as each fiber is surrounded by its own Kevlar layer. This design adds a layer of protection for use in a more rugged environment. 2.0mm, 2.5mm, 2.9mm subunits are available.

Ribbon Cables are used in the highest density applications including MPO uses in data centers and trunk cables for outside plant telecom and municipal cabling systems where space savings and high fiber count are critical factors.

Loose Tube Cables are most commonly used outdoors although there are some interconnect uses for high density micro-core loose tube cables within data centers. Loose tube cables for outside plant (OSP) applications are very robust and are built in a wide variety of styles including flat drop cables, typical/stranded, uni-tube, armored/direct-burial, armored paver cable, figure-8 self-supporting, all dielectric self-supporting (ADSS), ribbon, optical ground wire (OPGW) and more. These cables can also vary from gel flooded core/tube, to dry core/gel filled tubes, to dry core/dry tube designs, which offer the fastest termination and easiest handling for field technicians.



Cable Management and Labeling

When properly installing fiber optic cables, it's inevitable that users will need to bundling, securing and organizing cables. FiberNext offers products such as VELCRO® Brand ONE-WRAP and Cable Ties and other supplies to meet the application at hand. In addition to the management materials listed below, FiberNext also offers a wide variety of sizes, colors and packaging quantities on various other cable management items and brands.

With any cabling project it's important to clearly label all cables within the network at patching and junction points, as well as along the span. FiberNext offers labeling solutions for any application including inside and outside plant. **Below are some common styles and many others are available.**

Cable Ties:

TOL-00024-TYT	Cable Tie Gun, Adjustable Tension
CNS-ZT127-TYT	Cable Tie, 1300pc Assortment Pack
CNS-ZT041-TYT	Cable Tie, 50lb Light Duty 7.9" 1000pk, Black
CNS-ZT059-IDL	Cable Tie, 50lb light duty 8" 1000pk, Natural
CNS-ZT128-TYT	Cable Tie, 120lb Heavy Duty 12" 500pk, Black
CNS-ZT129-TYT	Cable Tie, 120lb Heavy Duty 15.25" 500pk, Black
CNS-ZT130-TYT	Cable Tie, 120lb Heavy Duty, 30" 50pk Black
CNS-ZT131-TYT	Cable Tie, 18Lb Write On ID, 4.3", 200Pk Natural



VELCRO® Brand ONE-WRAP® Straps:

CNS-VL057-TYT	VELCRO® Brand ONE-WRAP® Strap 3/4" x .50' Black Roll
CNS-VL023-ULN	VELCRO® Brand ONE-WRAP® Strap 1/2" x .75' Black Roll
CNS-VL025-TYT	VELCRO® Brand ONE-WRAP® Strap 3/4" x .75' Black Roll
Colors to Match Fiber Optic Jacket Colors Available!	
CNS-VL002-VEL	VELCRO® Brand ONE-WRAP® Strap 3/4" x 75' Orange Roll
CNS-VL003-VEL	VELCRO® Brand ONE-WRAP® Strap 3/4" x 75' Aqua Roll
CNS-VL004-VEL	VELCRO® Brand ONE-WRAP® Strap 3/4" x 75' Violet Roll
CNS-VL004-VEL	VELCRO® Brand ONE-WRAP® Strap 3/4" x 75' Yellow Roll



Electrical Tape:

CNS-TP067-TYT	General Purpose Electrical Tape 7ml White
CNS-TP068-TYT	General Purpose Electrical Tape 7ml Yellow
CNS-TP036-MMM	Super 33+ Professional Electrical Tape
CNS-TP064-TYT	Professional Elect. Tape 8ml Black, to -40Fo



Pre-Printed Label Dispensers:

CNS-LB001-MMM	0-9 Number Label Dispenser Cut-to-length
---------------	--



Indoor/Outdoor Fiber Optic Caution Tags:

MIS-LB013-TYT	Self Coiling Plastic Caution Tags 4"L x .055" Dia
MIS-LB014-TYT	Self Coiling Caution Tags 7.25"L x .73" Dia
MIS-LB008-MLK*	Self Coiling OSP Caution Tags -Custom Print



Fiber Optic Connector Cleaning

Dirt and contamination are a major cause of issues with fiber optic networks. FiberNext offers the leading brands of fiber optic connector cleaning products. From wipes to One-Click cleaning tools we have the cleaning supplies to keep your network operating at its maximum performance. **Some of our more popular items are listed below. If you don't see what you're looking for contact sales at 603-226-2400.**

Cleaning Solvents:

CNS-0001-GTV	99% Isopropyl Alcohol, 16oz Bottle
TOL-00001-MEN	Pump Top Bottle w Lock Lid for Alcohol
CNS-CL002-NFS	FCC2 Fiber Connector Cleaner, 3.0oz Can
CNS-CL011-NFS	FPF1 Fiber Preparation Fluid, 3.0oz Can
CNS-WP001-CHE	Alcohol Wipes, 50pk
CNS-CL001-CHE	Electro-Wash MX Pen



Dry Cleaning Tools:

CNS-WP001-KIM	Kim Wipes Optical Wipes, 280ct Box
CNS-WP002-MCC	MicroCare Wipes 90 Sheet Tub
CNS-CL007-NFS	Cletop Type B Reel Cleaner
CNS-CL008-NFS	Cletop B Tape Refill
CNS-CL054-NFS	1.25mm Mini One-Click Cleaning Tool
CNS-CL053-NFS	2.5mm Mini One-Click Cleaning Tool
CNS-CL070-NFS	MPO One-Click "push-to-clean" Tool
CNS-CL056-NFS	LC Duplex One-Click Cleaning Tool
CNS-CL022-USC	1.25mm (LC) One-Click Cleaning Tool
CNS-CL021-USC	2.5mm (SC) One-Click Cleaning Tool



Hand Tools

FiberNext carries a broad line of hand tools for installing fiber optic cable fiber from a variety of industry leading manufacturers including Ideal, Ripley, Sumitomo and many more. These tools are commonly used for installing, cutting, slitting, stripping, mid-entry on all types of fiber optic cables. **Here are some of the common hand tools we carry. If you don't see what you're looking for contact sales at 603-226-2400.**

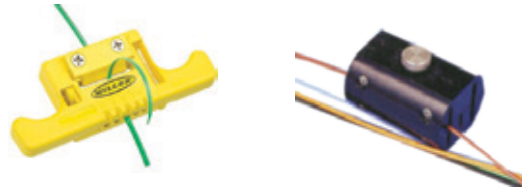
Stripping Tools:

TOL-FS026-SUM	3-way Univ Strip Tool
TOL-FS005-HRD	3-way Univ Strip Tool
TOL-FS001-MLR	F0103S 250um Univ Strip Tool
TOL-FS029-MLR	3-way Univ 250/900/3mm Strip Tool



Mid-Span Tube Entry Tools:

TOL-JS001-MLR	MSAT-5 Mid-entry Tube Splitter
TOL-CT020-MLR	MSAT-5 Replacement Blades 5pk
TOL-00003-CCS	Corning Mid-entry Tool 2.4-3.0mm



Cable Sheath Entry Tools:

TOL-CT007-IDL	Tube/Cable Ringing Tool Lg. Blue <14mm
TOL-CT026-IDL	Tube/Cable Ringing Tool Gray <3.2mm
TOL-CT004-IDL	Tube/Cable Ringing Tool .40"-.75" Blue
TOL-CT023-IDL	Tube/Cable Ringing Tool .50"-.1.0" Black
TOL-00102-SUM	Sumitomo Universal Sheath Ringer/Slitter
TOL-CT006-IDL	Swivel Cable Slitting/Ringing Tool 3/16" to 1"
TOL-FS014-URA	Flat Drop Cable Slitting Tool



Cable Cutting Tools

TOL-CT001-MLR	HD Cable/Kevlar Cutting Scissors
TOL-CT003-IDL	Large Handle Kevlar Cutting Scissors
TOL-CT005-MLR	FOKC Serrated Kevlar Scissors



Copper Networking

FiberNext offers a full complement of copper networking products from Cat5e and Cat6 cable to patch panels, jacks, faceplates and more. Our vendors include Hitachi, OCC, Comtran, HellermannTyton, Signamax and more. And don't forget the patch cords, we can supply the end-to-end solution!

Cat5e & Cat6 Cable Examples:

- PN: COP-CA002-HCM Cat5e CMP Plenum 1000' Box, Blue
- PN: COP-CA005-CTN Cat5e CMR Plenum 1000' Box, Blue (also in Yellow & White)
- PN: COP-CA007-CTN Cat6 CMR Riser 1000' Box, Blue (also in Yellow & White)
- PN: COP-CA004-CTN Cat6 CMP Plenum 1000' Box, Blue (also in Yellow & White)



Cat5e and Cat6 Patch Cords:

- PN: COP-CA011-FNX Cat5e 3' Patch Cord, Unbooted, Blue CMR
- PN: COP-CA012-FNX Cat5e 5' Patch Cord, Unbooted, Blue CMR
- PN: COP-CA003-FNX Cat5e 7' Patch Cord, Unbooted, Blue CMR
- PN: COP-CA004-FNX Cat6 3' Patch Cord, Unbooted, Blue CMR
- PN: COP-CA007-FNX Cat6 7' Patch Cord, Unbooted, Blue CMR
- PN: COP-CA007-FNX Cat6 25' Patch Cord, Unbooted, Blue CMR



Data Closet Patch Panels Examples:



Work Area Jacks and Faceplates Examples:



Media Conversion and Switching

To complement our passive network materials offering, FiberNext offers a wide breadth of active networking hardware from several manufactures. Our active networking devices includes media conversion, Ethernet switching, SFP modules and other devices used for a variety of commercial and industrial applications such as IP cameras, broadcasting, LAN networking, WAN networking, utility/smart grid, tactical, FTTX/PON networks and more.

Media conversion solutions support data, voice, video and image transport over a wide variety of transmission media. These products convert data from copper cable, multimode fiber, and single-mode fiber through Standard, Fast, and Gigabit Ethernet protocols.

Ethernet Switches deliver PoE, cost-effective network speed, plug & play convenience, and network control. through complete and comprehensive management options. Ethernet Switches solve an array of applications and power devices over low-voltage cable, reducing costs and have rapid ROI.

Below are examples of a couple of the brands we carry:



Ethernet Testing

Testing your next-generation 100G network

The growing demand for more bandwidth and the proliferation of data centers and inter-data-center connectivity is fueling the growth of 100G networks. Network equipment manufacturers (NEMs) are responding with solutions that are better suited to the mass deployment of 100G in the network with the inclusion of high-speed pluggable CFP4 and QSFP28 interfaces that lower costs and offer increased port density.

EXFO's FTBx-88200NGE Power Blazer is the first test solution to offer integrated CFP4 and QSFP28 interfaces, making it ready for the 100G network evolution.



Wireless Access Points

When connectivity really matters, organizations turn to Ruckus. FiberNext offers Ruckus indoor and outdoor wireless access points to fit just about any budget, performance requirement or deployment scenario. Whether you're challenged with high client density, Wi-Fi-unfriendly building materials or just rising employee or customer expectations, Ruckus access points provide secure, reliable access no matter how tough the environment. Every Ruckus AP, from the humblest to the boldest, is packed with patented technologies that go beyond the everyday to ensure superior connections and awesome user experiences.



DON'T SEE WHAT YOU'RE LOOKING FOR? GIVE US A CALL AND WE CAN FIND IT FOR YOU!

41 Locke Road, Concord, NH 03301 | T: 603-226-2400 | F: 603-226-2410 | www.FiberNext.com

Network Video

FiberNext is excited to announce its partnership with Axis Communications as a member of the Axis Channel Partner Program. As the industry leader in network video, Axis offers a wide range of products and services for video surveillance, access control, audio systems, as well as video analytics – improving security and optimizing business performance. FiberNext can provide you with a complete range of solutions, whether you need a smart system for basic surveillance or a more advanced security system.



Ethernet Lighting

FiberNext can provide you innovated PoE Lighting through their partnership with CREE. CREE is a market-leading innovator of lighting-class LEDs, LED lighting and semiconductor solutions for wireless and power applications. They are uniquely positioned to innovate new ways in which lighting will serve as a platform for emerging technologies and capabilities that will enrich lives, improve society and safeguard our planet.



Technical Services



Project Management

FiberNext can provide highly involved project management services for unique fiber optic install projects. We work closely with general contractors to provide comprehensive installation estimating, planning, scheduling, provisioning, and construction services to keep projects moving efficiently. We can provide turnkey solutions managing subcontractors to generate quality installations.

Network Audit

FiberNext can provide communication auditing for various network users. From campus network audits to WAN services including pole line audits and pathway analysis. We provide detailed audits and documentation for markets ranging from transportation, energy, broadcasting and municipal.

Field Services

FiberNext has a highly skilled and trained team of versatile fiber optic professionals that deliver diverse field services. From network testing and troubleshooting to full turnkey solutions we have the knowledge and experience to deliver against your specific requirements. FiberNext has developed a reputation for quality installations and services that our customers have come to rely on.

Training

FiberNext is a leading provider of technician training in fiber optic cabling in the Northeastern US region. Each of our 3-day Certified Fiber Optic Technician (CFOT[®]) programs are BICSI accredited and Fiber Optic Association (FOA) sanctioned.

Technical Services



Services Provided:

- Aerial Pathway Planning
- GPS Asset Mapping
- GIS Database Development
- Fiber Optic Cable Placement
- Rack & Hardware Installation
- Fiber Optic Termination
- Fiber Optic Fusion Splicing
- Aerial Fusion Splicing
- Insertion Loss Testing
- Return Loss Testing
- Bandwidth Testing
- Certification Testing
- OLTS Testing
- OTDR Testing
- Chromatic Dispersion Testing
- Polarization Mode Dispersion Testing
- Network Troubleshooting
- System Documentation
- Project Management
- Network Auditing
- Network Integration
- Sub-Contracting
- Network Design & Consulting
- Security Camera Installation
- Fiber Optic Technician Training

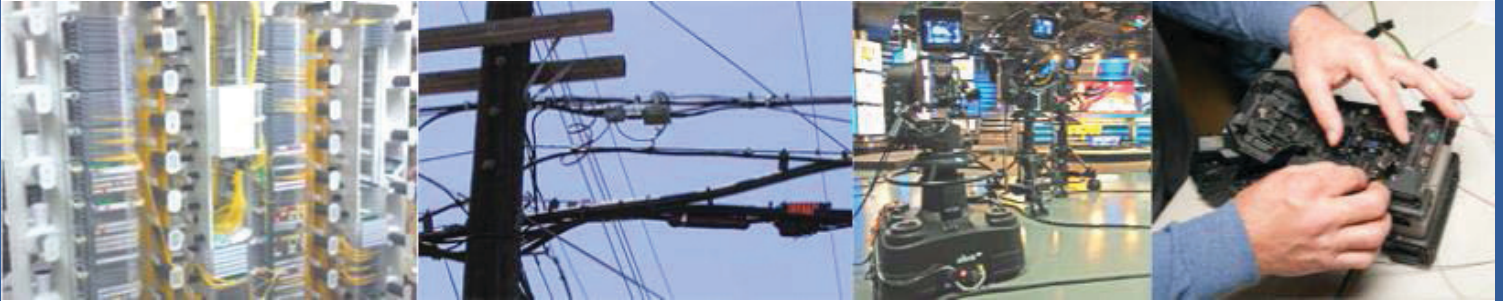
Our Equipment:

- Core Align Fusion Slicers
- V-Groove Fusion Splicers
- Quad LAN/WAN OTDRs
- Launch/Reference Cables
- MPO Field Installation tools
- Video Fiber Scopes
- Fiber Optic Talk Sets
- Insertion Loss Test Kits
- SM OLTS Test Kits
- SM Return Loss Meters
- Mass Fiber Optic Polishers
- MM Certification Test Kits
- Fiber Termination Kits
- Fuse-On Connector Kits
- Fiber Optic Identifiers (OFI)
- Gb Bandwidth Test Set
- Assorted Construction Tools
- Jobsite Trailers

Markets Served:

- Data Center
- Broadcast
- Cable & Internet
- LAN & Campus Networks
- Wide Area Networks
- Municipal Networks
- Utility & Smart Grid
- Windfarms
- Hydro Power
- Solar Panel Arrays
- Surveillance & Security
- Industrial Ethernet
- Oil & Gas

Training



Certified Fiber Optic Technician (CFOT®) 3-day program

In this program, students will learn the fundamentals of fiber optic networking for applications from the ground up. Beginning with important safety considerations, students will then be exposed to all the elements in a typical fiber optic network including various cable types, connectors, patching hardware, installation methodologies and industry standards. Students will also be trained on the types of equipment used to test and troubleshoot installed fiber optic cable. The program is highlighted by samples from industry leading manufacturers and incorporates a series of hands-on labs for connectors, splicing, inspection and certification testing of fiber networks.

- **Who should attend?** Anyone looking for a thorough understanding of fiber optic infrastructure systems including installers, electricians, IT managers, systems designers, end users, facility managers, ITS professionals, telecom/datacom service technicians and more.
- **Student Prerequisites:** None (although a background in communications, computer networking or cabling systems is strongly recommended but is not required).
- **Student Certification:** Obtained by taking the written CFOT exam on the third day of the program (included in the course price). Students must receive an exam score of 70% or higher to achieve FOA CFOT certification.
- **Classroom Ratio:** 60% lecture, 40% hands-on labs.
- **Accreditations:** FOA CFOT Certification and 1-year membership into the FOA as well as 21 BICSI continuing education credits for all BICSI members that attend.

We hold training classes once a month at our facility at 41 Locke Rd, Concord NH 03301.

For groups of 10 or more we can bring the training class to you.



For more information, to sign up for a class or to schedule a training at you location contact us at 603-226-2400 or at Sales@FiberNext.com.

DON'T SEE WHAT YOU'RE LOOKING FOR? GIVE US A CALL AND WE CAN FIND IT FOR YOU!

41 Locke Road, Concord, NH 03301 | T: 603-226-2400 | F: 603-226-2410 | www.FiberNext.com

Get FiberNext T-shirts customized with your company logo!



\$15.99 each. Available in White or Gray.

Size: S	White	PN: FNX-TSHIRT-W-S
	Gray	PN: FNX-TSHIRT-G-S
Size: M	White	PN: FNX-TSHIRT-W-M
	Gray	PN: FNX-TSHIRT-G-M
Size: L	White	PN: FNX-TSHIRT-W-L
	Gray	PN: FNX-TSHIRT-G-L
Size: XL	White	PN: FNX-TSHIRT-W-XL
	Gray	PN: FNX-TSHIRT-G-XL
Size: 2XL	White	PN: FNX-TSHIRT-W-2XL
	Gray	PN: FNX-TSHIRT-G-2XL

**Call us today to place your order
(603) 226-2400**



COPPER

WIRELESS

FIBER

SOLUTIONS

DON'T SEE WHAT YOU'RE LOOKING FOR? GIVE US A CALL AND WE CAN FIND IT FOR YOU!

41 Locke Road, Concord NH 03301 | T: 603-226-2400 | F: 603-226-2410 | www.FiberNext.com